

TRM 865

Experience Series®

Treadmill

Product Highlights

The TRM 865 treadmill adds value to your facility by combining essential reliability and ease of use with a feeling that's personalised to every step. Thoughtful design and performance deliver an exerciser experience that feels right. The TRM 865 makes it easier for you to provide a customer-focused environment. Quiet and efficient, we've streamlined the assembly, and included diagnostic tools to increase uptime and to keep operating costs down.

Product Features

1. P62 Console

The P62 console features personalised viewing and the remarkable clarity of TV and internet options that exercisers crave, all in a 10" screen. With the ability to mark selections as "favourite" for the future, exercisers can customise their workout experience based on what is important to them.

2. Power Factor Correction (PFC)

The 4 HP high-efficiency AC-motor drive (8 HP peak) is optimised with PFC for increased efficiency, improved performance, and reduced energy consumption by up to 30%.

3. Integrated Footplant Technology

Recognises exercisers' natural foot speeds and matches every stride for an ultra-smooth feel that enhances their workout experience.

4. Ground Effects® Impact Control System

Our patented GFX system combines ideal cushioning, support, and stability for exercisers. Precor decks are designed to provide more absorption in the front where exercisers' feet hit the belt and added rigidity at the back for a firm push-off.

5. Active Status Light

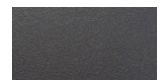
To increase uptime, an external status light lets you and your staff know at a glance the operating condition of your treadmill and when to perform life-extending maintenance.



Refined colourways with dark Tungsten covers and two frame colour options, Black Pearl and Storm Grey.



Black Pearl



Storm Grey



Specifications

Dimensions (L x W x H): 83 x 35 x 68.5 in / 211 x 89 x 174 cm

Equipment Weight: 430 lb / 195 kg

Step-up Height: 9.5 in / 24 cm

Power: 220/240 volt

Applicable country-specific power cord is supported*

Motor Drive: 4 high-efficiency AC-motor (8 HP peak)

Speed Range: 0.5-16 mph / 0.8-25.5 km/h

Elevation Range: - 3% to 15% incline in 0.5% increments

Total Workouts: 27

Language: English, Danish, Dutch, French, Finnish, German, Italian, Japanese, Korean, Norwegian, Polish, Portuguese, Russian, Simplified Chinese, Spanish, Swedish, Traditional Chinese, Turkish

Network Capabilities: Preva® network capable

Entertainment: 10 in / 25.4 cm LCD Capacitive Touch Screen
Mobile Device Charger and Audio Jack

Accessories: Integrated Reading Rack
Optional - Cable Management

Warranty: Visit www.precor.com for warranty terms.

* Contact your local Precor representative for further information