

EFX® 865

Experience Series®

ELLIPTICAL

Product Highlights

The EFX® 865 with Converging CrossRamp® combines essential reliability and ease of use with a natural, low-impact stride to add value to your facility. Design enhancements ensure easy cleaning and maintenance for you, while the unique adjustable Converging CrossRamp® technology and upper body moving handlebars deliver a total body workout for your exercisers.

Product Features

1. Handlebars

With moving handlebars, exercisers can push and pull with their upper body to achieve a total body workout.

2. P62 Console

The P62 console features personalised viewing and the remarkable clarity of TV and internet options that exercisers crave, all in a 10" screen. With the ability to mark selections as "favourite" for the future, exercisers can customise their workout experience based on what is important to them.

3. Converging CrossRamp®

Patented converging footpath design and incline adjustments between 10 and 35 degrees, along with 20 levels of resistance, give exercisers a challenging workout with a more natural feeling stride.

4. Covered Rear Drive Housing

Experience easy maintenance with the covered ramp and rear drive housing that enable quick access for cleaning.

5. Active Status Light

Alerts staff at a glance when the EFX needs maintenance or service.

Specifications

Dimensions (L x W x H): 80 x 28 x 72 in / 203 x 71 x 183 cm

Equipment Weight: 340 lb / 154 kg

Step-up Height: 8 in / 20 cm (pedal at lowest point)

Power: 220/240 volt

Applicable country-specific power cord is supported*

Total Workouts: 22

Resistance Levels: 20

Ramp angle 10-35 degrees

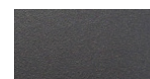
Language: English, Danish, Dutch, French, Finnish, German, Italian, Japanese, Korean, Norwegian, Polish, Portuguese, Russian, Simplified Chinese, Spanish, Swedish, Traditional Chinese, Turkish



Refined colourways with dark Tungsten covers and two frame colour options, Black Pearl and Storm Grey.



Black Pearl



Storm Grey



Network Capabilities: Preva® network capable

Entertainment: 10 in / 25.4 cm LCD Capacitive Touch Screen
Mobile Device Charger and Audio Jack

Accessories: Integrated Reading Rack
Optional - Cable Management

Warranty: Visit www.precor.com for warranty terms.

* Contact your local Precor representative for further information